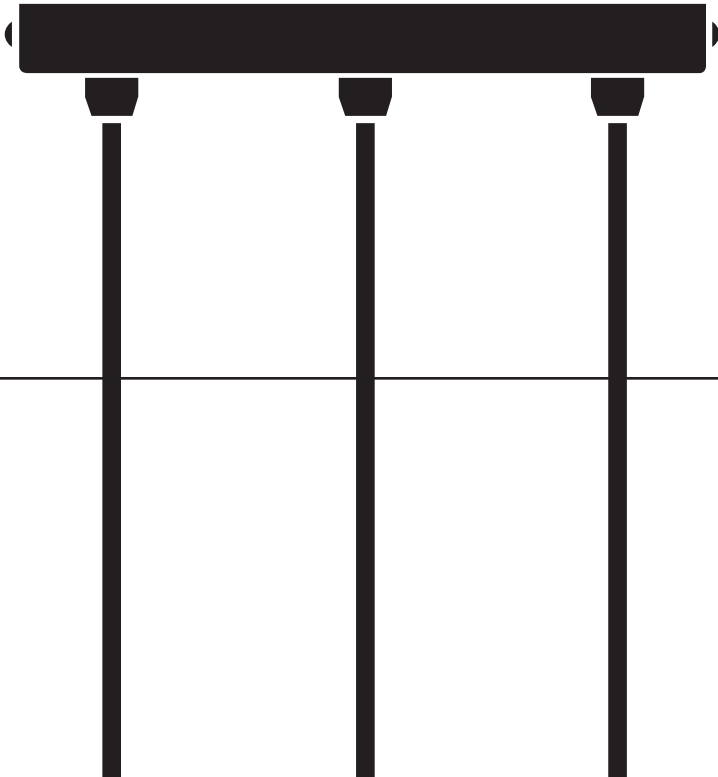


# ANGLEPOISE®

Original 1227™ | Designed by George Carwardine



**Original Range**  
Pendant Cluster Kit

# ANGLEPOISE® Original Range - Pendant Cluster Kit

Please read these instructions in conjunction with those included with the pendant. They will cover additional product details, electrical and safety information relating specifically to the lamp.

Veuillez lire ces instructions conjointement avec celles fournies avec la lampe. Elles aborderont des détails complémentaires sur les produits, ainsi que des informations électriques et de sécurité spécifiquement liées à la lampe.

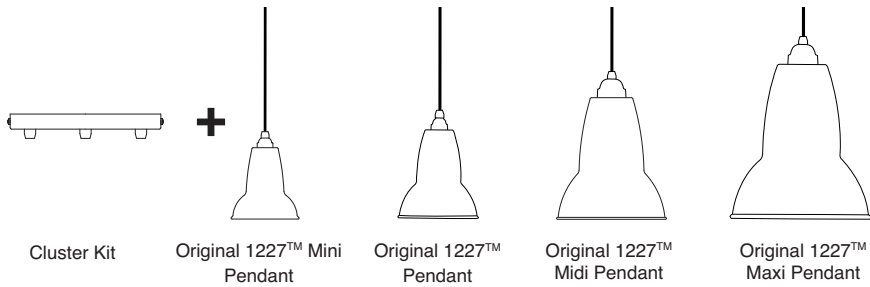
Bitte lesen Sie sich diese Anleitung zusammen mit der dem Lieferumfang der beigelegten Anleitung durch. Sie behandeln zusätzliche Produktdetails, elektrische Daten und Sicherheitshinweise, die sich speziell auf die Lampe beziehen.

Si prega di leggere queste istruzioni assieme a quelle incluse nella lampada. Tali istruzioni forniscono informazioni aggiuntive sul prodotto, informazioni sui rischi elettrici e sulla sicurezza che riguardano specificatamente la lampada.

Por favor, lea estas instrucciones en relación con las incluidas con la lámpara. Cubrirán detalles adicionales del producto e información eléctrica y de seguridad relativa específicamente a la lámpara.

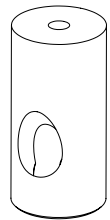
The Original Range Pendant Cluster Kit is only compatible with:

- Original 1227™ Mini Pendant, Original 1227™ Pendant
- Original 1227™ Midi Pendant and Maxi Pendant **(with ceiling hooks only)**

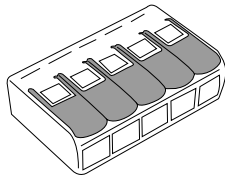


## ASSEMBLY PARTS & TOOLS:

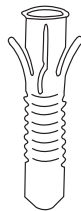
Your Anglepoise® comes supplied with everything you need to assemble and install your product. The assembly parts and tools you'll find in the box are:



3 x 100895  
Ceiling Hook



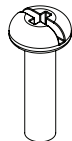
2 x 100896  
5 Way WAGO  
Connector



5 x 100214  
Rawl Plug



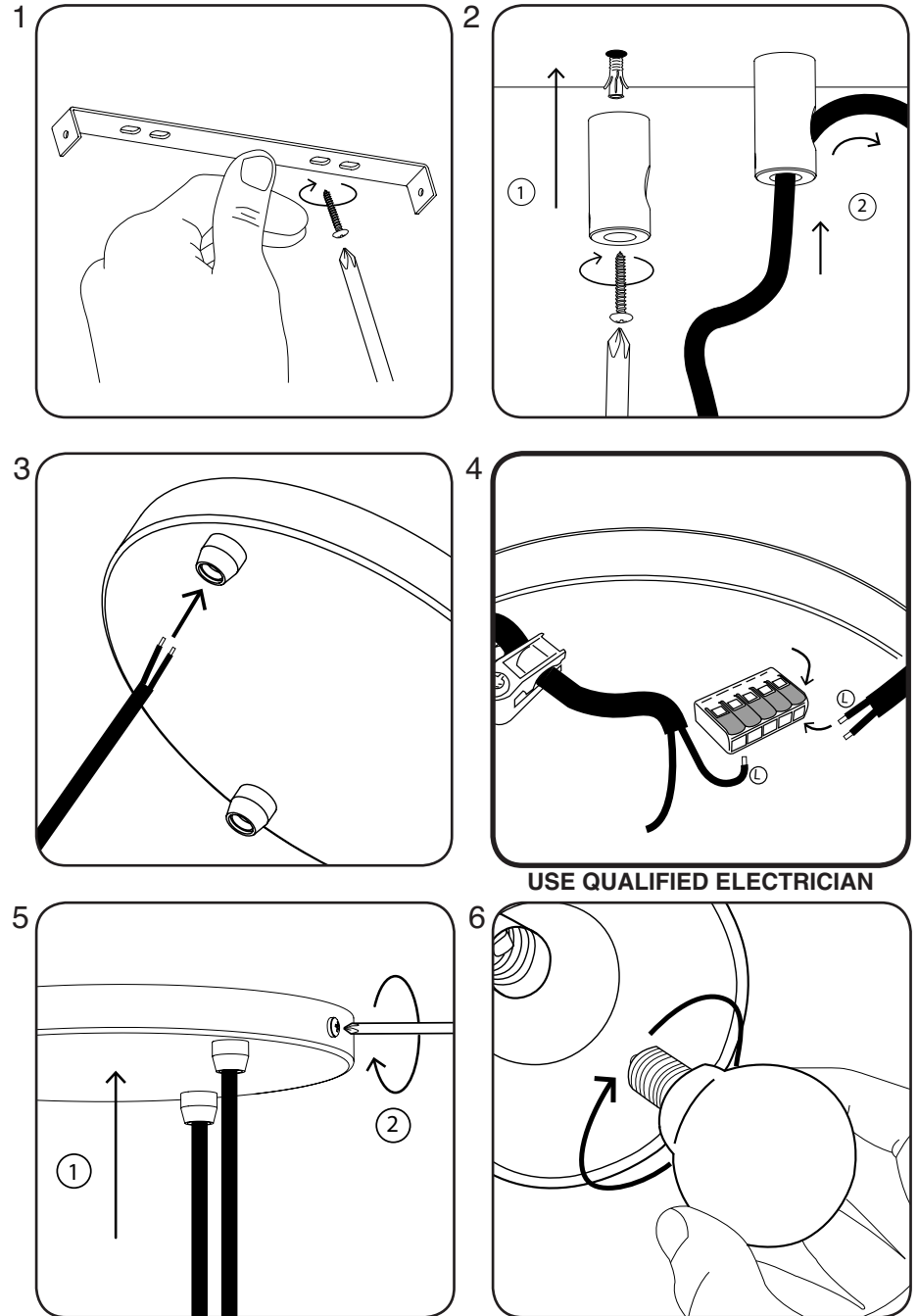
5 x 100215  
Self Tapping  
Screw



2 x 100858  
8-32 UNC  
Screw  
**(for US only)**

PARTS NOT TO SCALE

## INSTALLATION:



**USE QUALIFIED ELECTRICIAN**

## PRODUCT WARRANTY:

For warranty information, please visit:

**UK & International:** [www.anglepoise.com/warranty](http://www.anglepoise.com/warranty)

**US & Canada:** [us.anglepoise.com/warranty](http://us.anglepoise.com/warranty)

## NEWSLETTER:

Sign up to the Anglepoise® newsletter for the latest news and updates at:

**UK & International:** [www.anglepoise.com/newsletter](http://www.anglepoise.com/newsletter)

**US & Canada:** [us.anglepoise.com/newsletter](http://us.anglepoise.com/newsletter)

## DOWNLOADS:

For news, technical information, CAD files, images and the latest Anglepoise® brochure, please visit:

[files.anglepoise.com](http://files.anglepoise.com)

## CONTACT:



### UK Headquarters:

Anglepoise Ltd  
A10 Railway Triangle  
Walton Road  
Farlington  
Hampshire  
England  
PO6 1TN



### UK & International:

+44 (0) 2392 224450

### North & South America:

+1 (888) 5193225

[www.anglepoise.com](http://www.anglepoise.com)

[technical@anglepoise.com](mailto:technical@anglepoise.com)

Find @Anglepoise On

