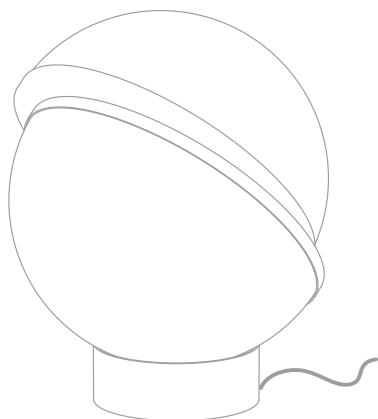


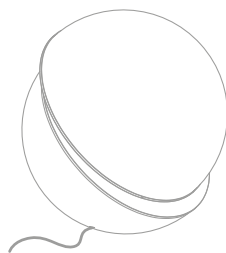


# LEE BROOM

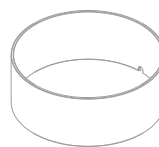


## MINI CRESCENT TABLE LAMP

### CONTENTS



1 X  
CRESCENT DOME



1 X  
TABLE LAMP BASE

### ATTENTION

- THIS PRODUCT IS FOR INTERIOR USE ONLY AND SHOULD BE INSTALLED IN A DRY ENVIRONMENT
- WHEN SWITCHED ON, THE CRESCENT LIGHT MAY BECOME HOT
- BULB IS SUPPLIED. LEE BROOM RECOMMEND 6W E27 2700K DIMMING LED BULB. PLEASE SEE BULB REPLACEMENT INSTRUCTIONS TO INSERT NEW BULB.



6W LED  
MAXIMUM  
WATTAGE

220/240V  
50-60HZ

E27  
LAMP  
HOLDER

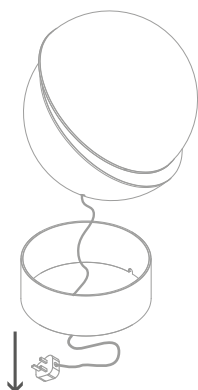
### CARE AND CLEANING

- ONLY ATTEMPT TO CLEAN WHEN CRESCENT LIGHT IS SWITCHED OFF
- PLEASE ALLOW A SUITABLE COOLING PERIOD BEFORE ATTEMPTING TO CLEAN THE CRESCENT LIGHT OR REPLACE THE BULB
- ONLY USE A NON-ABRASIVE, SOFT, DRY CLOTH WHEN CLEANING THE CRESCENT LIGHT

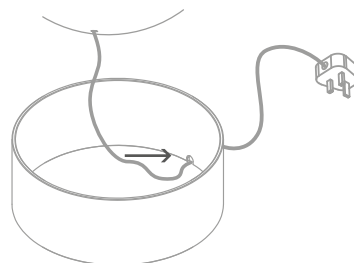
### ASSEMBLY

1. INSTALL BULB - SEE NEXT PAGE.
2. FEED THE PLUG FROM THE CRESCENT DOME THROUGH THE TABLE BASE.
3. PLACE BRASS BASE ON A SUITABLE FLAT SURFACE WITHIN 2M OF A POWER SUPPLY.
4. ENSURE THE POWER CABLE IS PLACED THROUGH THE CABLE EXIT IN THE TABLE BASE.
5. SIT THE CRESCENT DOME ONTO THE BASE.

2.



4.



5.

