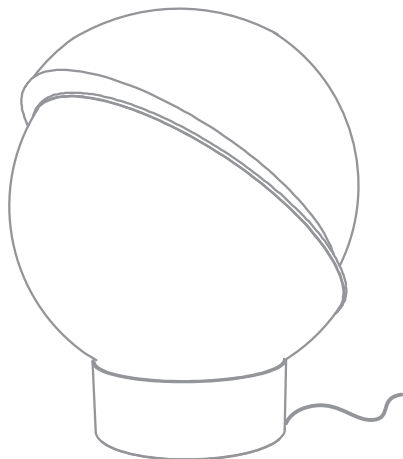


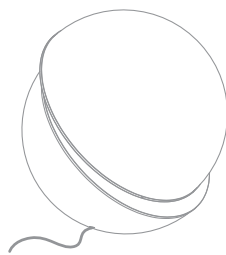


LEE BROOM

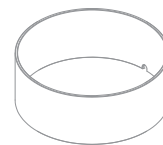


CRESCENT TABLE LAMP

CONTENTS



1 X
CRESCENT DOME



1 X
TABLE LAMP BASE



1 X
E27 LED
BULB

ATTENTION

- THIS PRODUCT IS FOR INTERIOR USE ONLY AND SHOULD BE INSTALLED IN A DRY ENVIRONMENT
- WHEN SWITCHED ON, THE CRESCENT LIGHT MAY BECOME HOT
- LED BULB SUPPLIED IS : MEGAMAN 13W E27 2800K OPAL CLASSIC DIMMING WHICH LEE BROOM RECOMMEND FOR CORRECT BRIGHTNESS AND COLOUR TEMPERATURE. ALTERNATIVE BULBS ARE AVAILABLE.



40W
MAXIMUM
WATTAGE

220/240V
50-60HZ

E27
LAMP
HOLDER

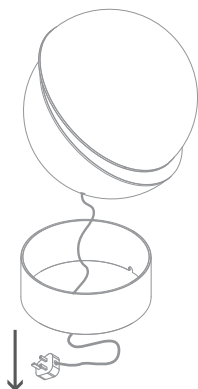
CARE AND CLEANING

- ONLY ATTEMPT TO CLEAN WHEN CRESCENT LIGHT IS SWITCHED OFF
- PLEASE ALLOW A SUITABLE COOLING PERIOD BEFORE ATTEMPTING TO CLEAN THE CRESCENT LIGHT OR REPLACE THE BULB
- ONLY USE A NON-ABRASIVE, SOFT, DRY CLOTH WHEN CLEANING THE CRESCENT LIGHT

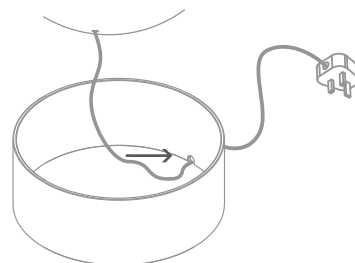
ASSEMBLY

1. INSTALL BULB - SEE NEXT PAGE.
2. FEED THE PLUG FROM THE CRESCENT DOME THROUGH THE TABLE BASE.
3. PLACE BRASS BASE ON A SUITABLE SURFACE WITHIN 2M OF A POWER SUPPLY
4. ENSURE THE POWER CABLE IS PLACED THROUGH THE CABLE EXIT IN THE TABLE BASE
5. SIT THE CRESCENT DOME ONTO THE BASE

2.



4.



5.

