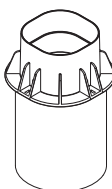
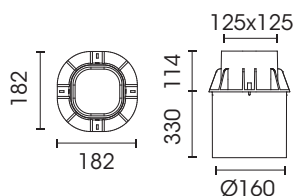
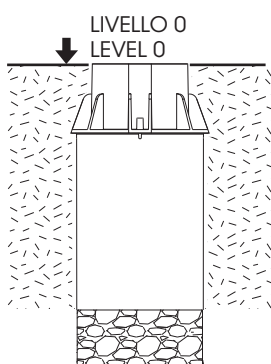
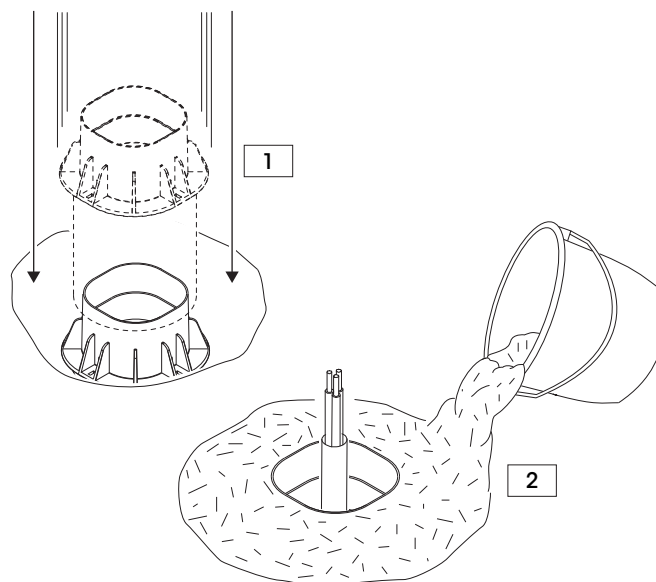


POINTBREAK
BALISAGE 1-40,
POINTBREAK
BALISAGE 1-80
cod. F023Z020000

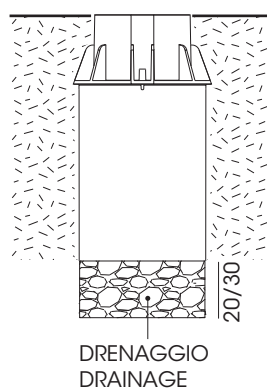


POINTBREAK
BALISAGE 2-60
cod. F023Z030000

POINTBREAK
BALISAGE 2-105
cod. F023Z040000

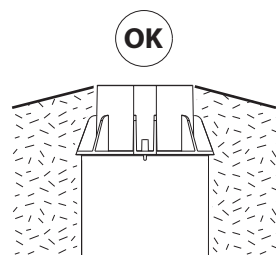


Cassaforma a filo
pavimento finito
Recessed box to be
flush with the
installation surface



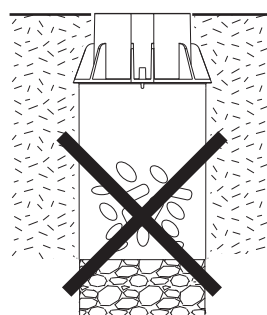
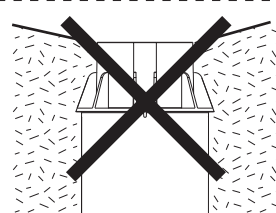
Predisporre 20-30 cm di ghiaia,
poi riempirlo di acqua e
assicurarsi che esca tutta entro
30 minuti.
In caso contrario è obbligatorio
un sistema di drenaggio
supplementare (es. tubo
drenaggio per applicazioni in
cemento).

Arrange for a 20-30cm
drainage gravel layer and fill it
with water.
If after 30 minutes water still
stagnates it is compulsory to integrate an
additional draining system
(e.g. drain pipe).



Evitare l'installazione in
avvallamenti o in punti di
ristagno d'acqua.

To avoid water stagnation do
not place the box for installa-
tion on hollow areas.



Prima di montare l'apparecchio
rimuovere eventuali materiali
presenti all'interno della
cassaforma.

Before mounting the device,
remove any material present
inside the box.

FLOS

Outdoor