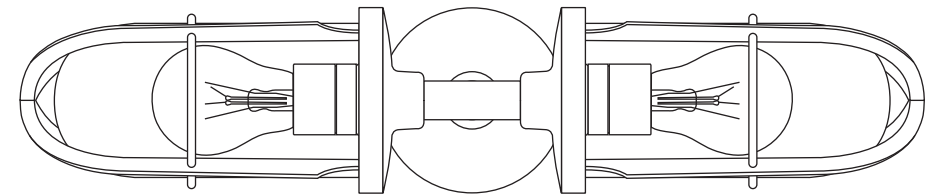
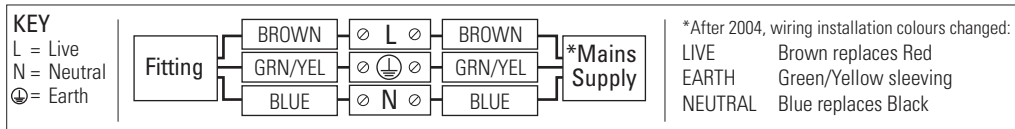


These instructions are provided for your safety in order to prevent the risk of Fire, Electric shock or Injury. It is vitally important that they are read in their entirety before installing your fitting. Please retain for future reference.

1. If you are in any doubt consult a qualified electrician as to the installation of the fitting. Install in accordance with current IEE wiring regulations. It is recommended that this fitting is installed by a qualified electrician.
2. Ensure that the electrical supply is OFF. Disconnect the electrical supply at the fuse-board.
3. If removing an existing fitting first, note all wiring connections: record which of the house wires is connected to the live, neutral and earth terminals.
4. Carefully identify where the supply cable is (and check there are no other cables in the area) to avoid damage to concealed wiring during installation.
5. Position the light where desired ensuring that there is suitable support adjacent to where you will connect to the house supply and mark position of fixing holes, before drilling appropriate holes as below.
6.
 - a. Brick or masonry: Drill holes into which the wall plugs tightly fit, then insert wall plugs.
 - b. Wood: No hole necessary (unless small pilot hole required), screws can be screwed directly into the timber.
 - c. Plaster/Cavity: Special cavity wall fittings are required, rather than provided fixings. These are widely available from good hardware or DIY store and should come with their own instructions that must be followed. It may be easier to relocate the fitting so that you screw directly into a timber joist or beam.
7. Support the fitting so that no strain is applied to the wiring when making the electrical connections. If necessary get a colleague to help.
8. Electrical connection: this light fitting must be earthed. Make connections following the diagram below using the terminal block provided. A small flat-head screwdriver is required.



9. Double check all the connections are secure and that no loose strands of wire are left out of the connector. Ensure the lid of the terminal block is closed securely after making the connections.
10. Check that no wires are trapped behind or within the fitting and complete the installation, referring to the installation diagram inside.
11. Fit the correct type and wattage of lamp (or less). Be careful not to overtighten the lamp.
12. Switch on at the fuse-board. Your light fitting is now ready for use.

Other Important Information

Switch off at mains before changing lamp(s). Never fit a lamp of greater wattage than recommended. Ensure children do not play with the light fitting. Dispose of old lamps carefully. Never leave a fitting without a lamp in position (or someone can accidentally touch the contacts). Adjust fitting only when power to the fitting is off and has been left to cool. If the external flexible cable or cord of this luminaire is damaged, it shall exclusively be replaced by the manufacturer, his service agent or a similar qualified person in order to avoid a hazard.

Cleaning and Maintenance

Metal finishes should only be cleaned with a soft, dry cloth. Do not use polishes or abrasives. Glass can be cleaned by hand, using a soft damp cloth with a suitable glass cleaner if necessary. Switch off power to the fitting before cleaning. Spare parts are available for this product, please contact us on the details below.

Established in 1990, Original BTC manufactures relaxed, familiar lighting for traditional and contemporary homes. All products are hand-assembled in Oxford from high quality components, produced in the UK.

ORIGINALBTC.COM
 +44 (0)1993 882 251
 UNIT 21 / 22 AVENUE ONE, STATION LANE, WITNEY, OX28 4XZ, ENGLAND



ORIGINAL BTC
 BRITISH LIGHTING MANUFACTURERS
 LONDON - PARIS



Ship's Double Well Glass Light

| 230V ac 50Hz | IP54

7208 Ship's Double Well Glass Light

LAMP GUIDANCE			
BASE	SHAPE	TYPE*	WATTAGE**
E27	GLS BALL	INCANDESCENT ✓	60W MAX
		CFL ✓	15W
		ECO-HALOGEN ✓	28W
		LED ✓	12W

* Warm white (2700k) low energy lamps recommended.
 ** Wattage value provided as a guide to suitable lamps. Lower wattage than stated may be used.

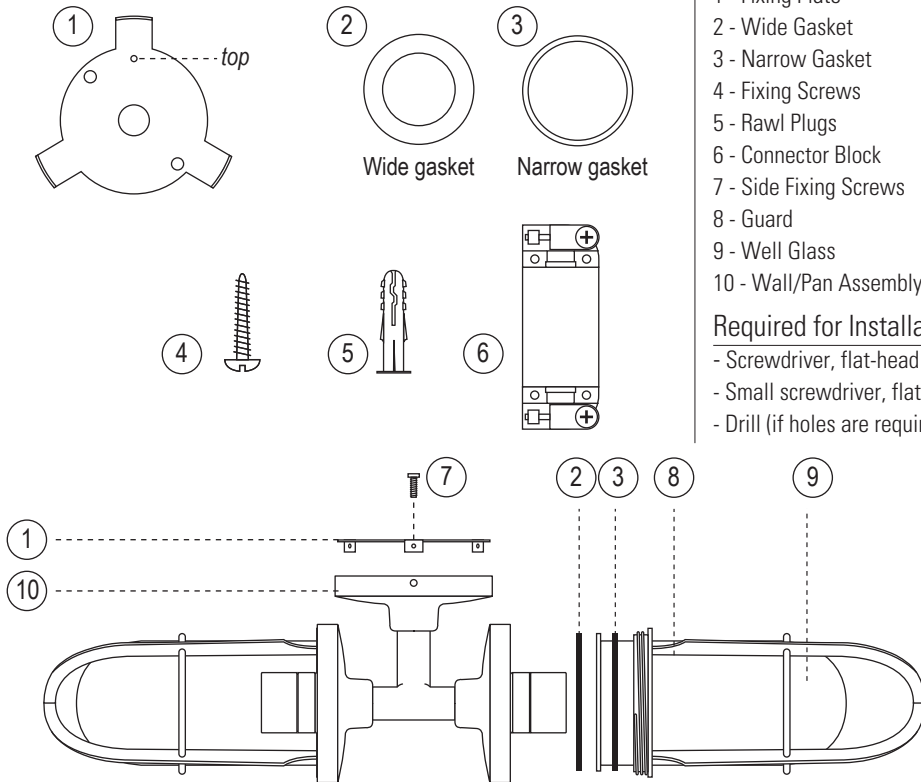
Contents & Assembly

Contents

- 1 - Fixing Plate
- 2 - Wide Gasket
- 3 - Narrow Gasket
- 4 - Fixing Screws
- 5 - Rawl Plugs
- 6 - Connector Block
- 7 - Side Fixing Screws
- 8 - Guard
- 9 - Well Glass
- 10 - Wall/Pan Assembly

Required for Installation

- Screwdriver, flat-head
- Small screwdriver, flat-head
- Drill (if holes are required)



PLEASE READ THE INSTRUCTIONS ON THE REVERSE BEFORE YOU BEGIN INSTALLING YOUR LIGHT

Installation and Assembly Instructions

STEP 1

Install fixing plate, referring to fig.1 and 2 to ensure the fitting will be straight and level. The fitting can be installed horizontally or vertically. Refer to points 1-6 overleaf.

STEP 2

Make connection to your main supply referring to fig.3 and points 7-10 overleaf. Depending on the construction of your mounting surface, the connection can be housed within the backplate, or within a void in the wall/ceiling

STEP 3

Assemble the rest of the fitting, referring to the illustration below. Ensure the backplate is firmly fixed to the fixing plate using the side fixing screws and the guards are screwed firmly into the pan to support the well glasses so there is a tight fit, with the gaskets positioned correctly. Do not overtighten.

If installing this light in an exterior or damp location, a bead of silicone sealant should be applied around the backplate to maintain the IP rating and prevent any damage caused by moisture ingress.

Installation Diagram

FIG.1

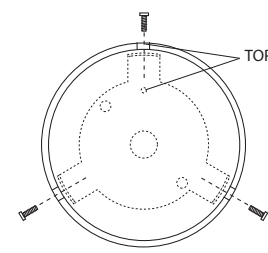
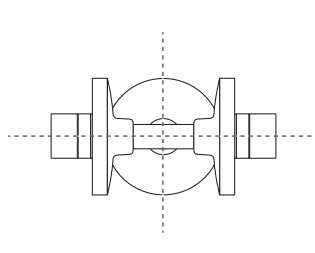


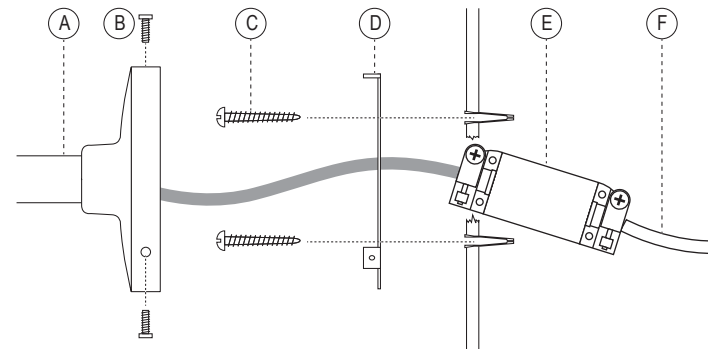
FIG.2



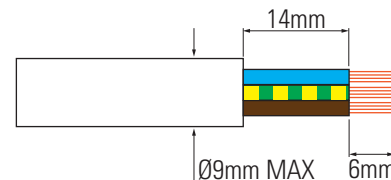
Key

- A Backplate
- B Side Fixing Screws
- C Fixing screws
- D Fixing Plate
- E Connector Block
- F Main Supply

FIG.3



Main Supply Cable Preparation



Please prepare the supply cable as shown. Note the maximum cable diameter for the supplied connector is 9mm, with the maximum conductor size 2.5mm².